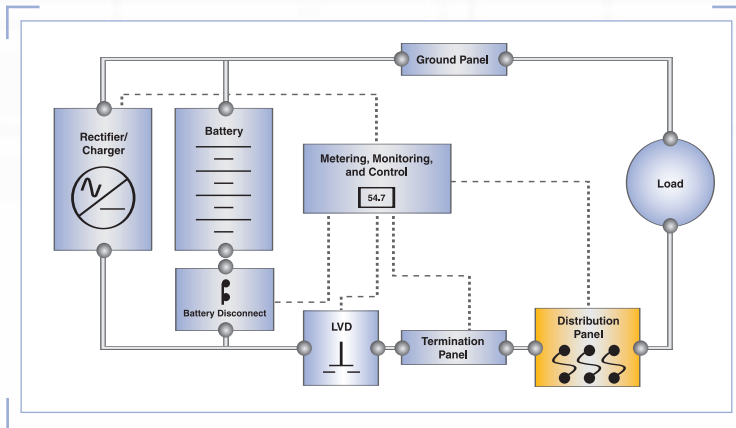


CIRCUIT BREAKER PANELS AND COMPONENTS



C&D Technologies' Circuit Breaker Panels and Components are modular building blocks that allow for systems to be configured to meet specific needs. A selection of breaker types and configurations provides the flexibility to meet specific application needs.

FEATURES AND BENEFITS

Modular Design

Wide selection of breaker panels allows wide variety of system layout.

Breaker Trip Alarm

Most AM1 style panels are equipped with a breaker trip alarm relay and LED.

Quality Materials

Extensive quality control insures components are manufactured to exacting standards resulting in trouble free operation in the field.

Contents

- Compact AM1 Breaker Panels
- AM1 Breaker Panel with Ground Return
- AM1 Split Bus Breaker Panel
- General Purpose QO1 Breaker Panel
- Front Access AM1 Breaker Panel (12V only)
- Combination Distribution Panel
- GJ1 Breaker Panel

Breaker Panel Selection Guide

	Breaker Type	Breaker Assembly	Max. # of Breakers	Max. Breaker Amperage	Ground Return	Split Bus	Access	Shunt	LVD
Compact AM1 Breaker Panel	AM1	Bolt-in	4	100			Rear		
AM1 Breaker Panel with Ground Return	AM1	Bolt-in	13	100	•		Rear		
Split Bus AM1 Breaker Panel	AM1	Bolt-in	10 / 10	100		•	Rear		
General Purpose AM1 Breaker Panel	AM1	Bolt-in	24	100			Rear	Opt	
Front Access QO1 Breaker Panel	QO1	Snap-in	20	70			Front	Opt	
Combination Distribution Panel	QO1	Snap-in	20	70	•		Front		•
GJ1 Breaker Panel	GJ1	Bolt-in	2	600			Rear	•	

COMPACT AM1 BREAKER PANEL

The Compact Breaker Panel requires only 2RU of rack space and is equipped with a Breaker Trip Alarm relay and LED. Maximum current capacity for these panels is 400 amps. Breaker kits include breaker, solderless load lug, breaker-to-bus bar link and mounting hardware.

Breaker Panels

Part Number	Width (in)	No. of Breaker Positions	Alarm Voltage	Weight lb (kg)	Height
CB13P	19	3	N/A	3.0 (1.4)	2 RU
111-3905-12	23	4	12	4.5 (2.0)	2 RU
111-3905-24	23	4	24	4.5 (2.0)	2 RU
111-3905-48	23	4	48	4.5 (2.0)	2 RU



Breaker Kits

Part Number	Amps	Part Number	Amps
274-3810-05	5	274-3810-40	40
274-3810-10	10	274-3810-50	50
274-3810-15	15	274-3810-60	60
274-3810-20	20	274-3810-70	70
274-3810-25	25	274-3810-80	80
274-3810-30	30	274-3810-90	90
274-3810-35	35	274-3810-100	100
274-3923-00	Mandatory cover for unused positions		

AM1 BREAKER PANEL WITH GROUND RETURN

The AM1 Breaker Panel with Ground Return provides a compact solution to for small systems. These panels provide the ground return bar and are equipped with a Breaker Trip Alarm relay and LED. Maximum current capacity for these panels is 400 amps. Breaker kits include breaker, solderless load lug, breaker-to-bus bar link and mounting hardware.

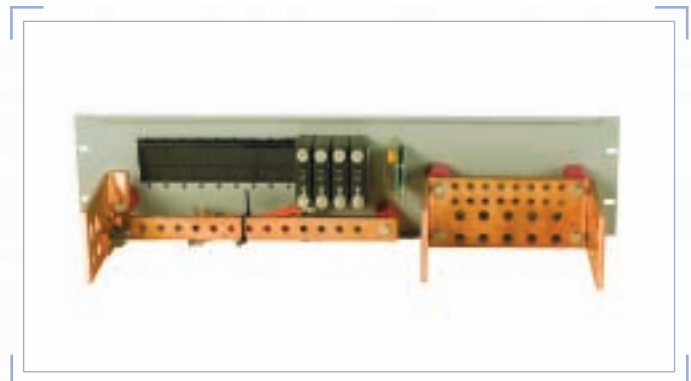
Breaker Panel with Ground Return

Part Number	Width (in)	No. of Breaker Positions	Alarm Voltage	Weight lb (kg)	Height
111-3906-12	23	13	12	7.0 (3.2)	3 RU
111-3906-24	23	13	24	7.0 (3.2)	3 RU
111-3906-48	23	13	48	7.0 (3.2)	3 RU



Breaker Kits

Part Number	Amps	Part Number	Amps
274-3811-05	5	274-3811-40	40
274-3811-10	10	274-3811-50	50
274-3811-15	15	274-3811-60	60
274-3811-20	20	274-3811-70	70
274-3811-25	25	274-3811-80	80
274-3811-30	30	274-3811-90	90
274-3811-35	35	274-3811-100	100
274-3923-00	Mandatory cover for unused positions		

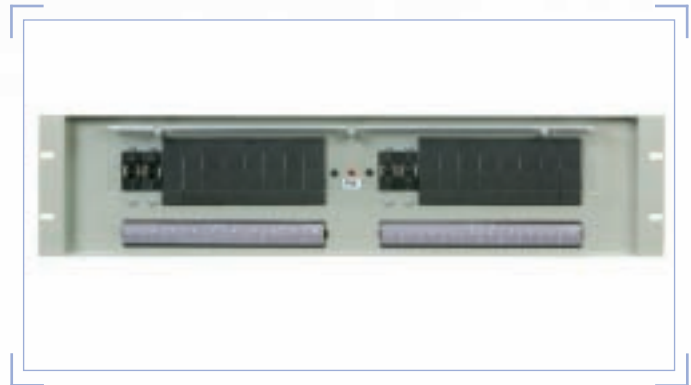


AM1 SPLIT BUS BREAKER PANEL

The AM1 Split Bus Panel provides 10 breaker positions for both an “A” and “B” feed. These panels are equipped with a Breaker Trip Alarm relay and LED. Maximum current capacity for these panels is 400 amps. Breaker kits include breaker, solderless load lug, breaker-to-bus bar link and mounting hardware.

Split Bus Breaker Panel

Part Number	Width (in)	No. of Breaker Positions	Weight lb (kg)	Height
111-3890-10	23	10 / 10	9.0 (4.1)	3 RU



BREAKER KITS FOR SPLIT BUS AND GENERAL PURPOSE PANELS

Part Number	Amps	Part Number	Amps
274-2920-05	5	274-2920-40	40
274-2920-10	10	274-2920-50	50
274-2920-15	15	274-2920-60	60
274-2920-20	20	274-2920-70	70
274-2920-25	25	274-2920-80	80
274-2920-30	30	274-2920-100	100
213-3923-00	Mandatory cover for unused positions		

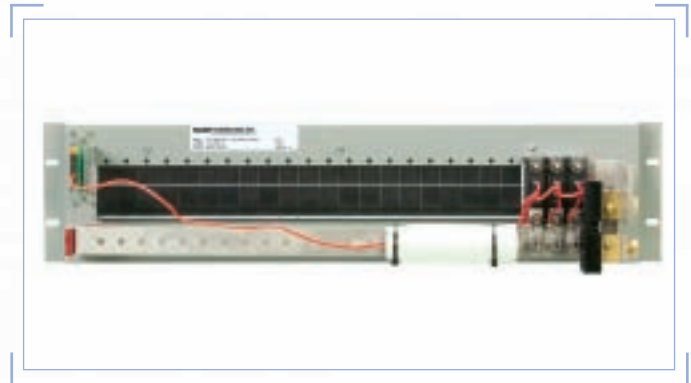
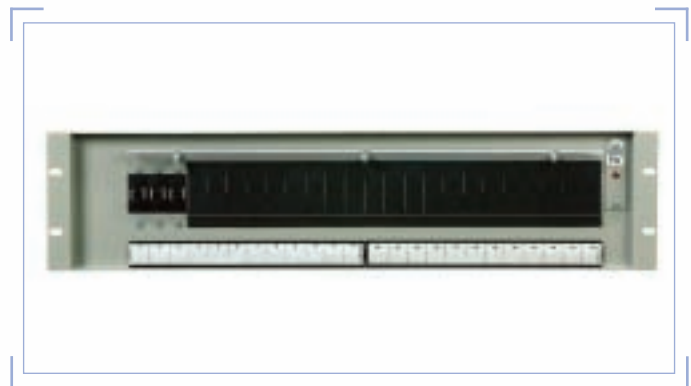


GENERAL PURPOSE AM1 BREAKER PANEL

The General Purpose AM1 Breaker Panel is a cost effective solution for most systems. These panels are equipped with a Breaker Trip Alarm relay and LED and an optional load shunt. Maximum current capacity for these panels is 400 amps. Breaker kits include breaker, solderless load lug, breaker-to-bus bar link and mounting hardware.

General Purpose Breaker Panel

Part Number	Width (in)	No. of Breaker Positions	Weight lb (kg)	Height	Shunt
111-3768-00	19	18	6.0 (2.7)	3 RU	No
111-3768-10	19	18	7.0 (3.2)	3 RU	400 A
111-3765-00	23	24	6.0 (2.7)	3 RU	No
111-3765-10	23	24	7.0 (3.2)	3 RU	400 A

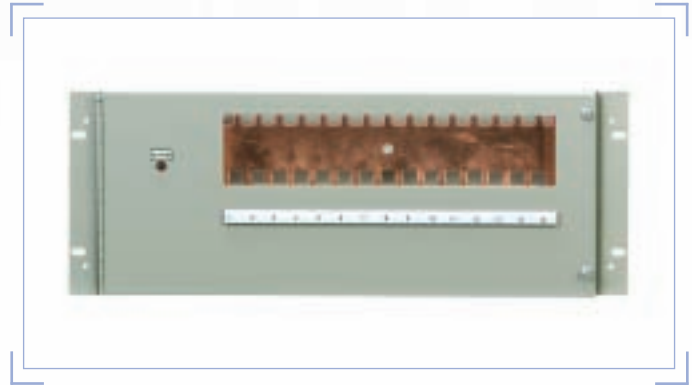


FRONT ACCESS QO1 BREAKER PANEL (12V ONLY)

The Front Access QO1 Breaker Panels provide front access for installation and maintenance and use snap-in style QO1 breakers. These panels are equipped with a Breaker Trip Alarm relay and LED. Maximum current capacity for these panels is 400 amps. Breaker kits include breaker and mounting hardware.

Front Access Breaker Panel

Part Number	Width (in)	No. of Breaker Positions	System Voltage	Weight lb (kg)	Height	Shunt
111B-2905-01	19	15	- 12	13.0 (5.9)	4RU	No
111B-2905-05	19	15	- 12	13.0 (5.9)	4RU	400A
111B-2905-11	19	15	+ 12	13.0 (5.9)	4RU	No
111B-2905-13	19	15	+ 12	13.0 (5.9)	4RU	400A
111B-2906-01	23	20	- 12	15.0 (6.8)	4RU	No
111B-2906-05	23	20	- 12	15.0 (6.8)	4RU	400A
111B-2906-11	23	20	+ 12	15.0 (6.8)	4RU	No
111B-2906-13	23	20	+ 12	15.0 (6.8)	4RU	400A



COMBINATION DISTRIBUTION PANEL

The Combination Distribution Panel provides an insulated ground and load return bus bar, an insulated termination bus bar, a low-voltage disconnect (LVD) circuit and up to 20 positions for QO1-type load distribution circuit breakers. The panel is completely accessible from the front through a hinged door.

The included low-voltage disconnect protects battery systems and connected equipment. When the battery voltage drops below an adjustable level, the LVD disengages the contactor to disconnect all loads from the batteries. This prevents excessive battery discharge and protects the connected system from low voltages.

Combination Distribution Panel

Part Number	Width (in)	No. of Breaker Positions	System Voltage	Weight lb(kg)	Height	LVD
111B-3301-10	19	15	- 24	35.0 (15.9)	6 RU	400A
111B-3305-10	19	15	+ 24	35.0 (15.9)	6 RU	400A
111B-3309-10	19	15	- 48	35.0 (15.9)	6 RU	400A
111B-3302-10	23	20	- 24	35.0 (15.9)	6 RU	400A
111B-3306-10	23	20	+ 24	35.0 (15.9)	6 RU	400A
111B-3310-10	23	20	- 48	35.0 (15.9)	6 RU	400A
111B-3311-10	23	20	+ 48	35.0 (15.9)	6 RU	400A



BREAKER KITS AND ACCESSORIES FOR FRONT ACCESS AND COMBINATION PANELS

Breaker Kits

Part Number	Amps
274-2912-10	10
274-2912-15	15
274-2912-20	20
274-2912-25	25
274-2912-30	30
274-2912-40	40
274-2912-50	50
274-2912-60	60
274-2912-70	70

Mandatory Cover for Unused Positions

Part Number	Positions
202-5308-00	1
202-5308-01	2
202-5308-02	3
202-5308-03	4
202-5308-04	5
202-5308-07	8
202-5308-09	10
202-5308-11	12

GJ1 BREAKER PANELS

GJ1 Breaker Panels provide a convenient way to protect higher amperage loads in a custom system. These panels are equipped with a Breaker Trip Alarm relay and LED and can be equipped with shunts.

GJ1 Breaker Panel

Part Number	Width (in)	No. of Breaker Positions	Amperage	Weight lb (kg)	Height	Shunt (Amps)
111-3764-10	23	2	100	12.0 (5.4)	3 RU	200
111-3764-11	23	2	150	12.0 (5.4)	3 RU	200
111-3764-12	23	2	175	12.0 (5.4)	3 RU	200
111-3764-13	23	2	225	12.0 (5.4)	3 RU	400
111-3764-14	23	2	250	12.0 (5.4)	3 RU	400
111-3763-00	23	1	400	13.0 (5.9)	3 RU	No
111-3763-10	23	1	400	13.0 (5.9)	3 RU	400
111-3762-10	23	1	600	14.0 (6.3)	3 RU	600



 **TECHNOLOGIES, INC.****POWER SYSTEMS DIVISION**

1400 Union Meeting Road
P.O. Box 3053 • Blue Bell, PA 19422-0858
(215) 619-2700 • Fax (215) 619-7899 • (800) 543-8630
customersvc@cdtechno.com
www.cdtechno.com

Any data, descriptions or specifications presented herein are subject to revision by C&D Technologies, Inc. without notice. While such information is believed to be accurate as indicated herein, C&D Technologies, Inc. makes no warranty and hereby disclaims all warranties, express or implied, with regard to the accuracy or completeness of such information. Further, because the product(s) featured herein may be used under conditions beyond its control, C&D Technologies, Inc. hereby disclaims all warranties, either express or implied, concerning the fitness or suitability of such product(s) for any particular use or in any specific application or arising from any course of dealing or usage of trade. The user is solely responsible for determining the suitability of the product(s) featured herein for user's intended purpose and in user's specific application.