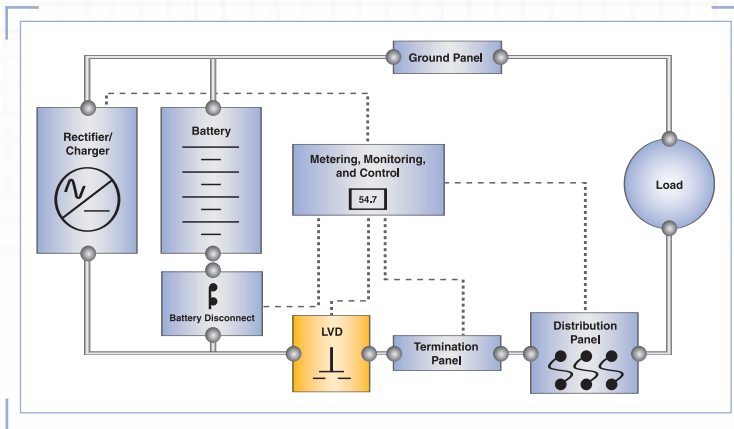


LOW VOLTAGE DISCONNECT (LVD) PANELS



C&D Technologies' Low Voltage Disconnect Panels are designed to automatically disconnect the load from the battery when the system voltage drops below a preset value. Two version of LVD panels are available, the LVD Disconnect Panels which include the electronics to sense voltage and control the contactor and the LVD Contactor Panels that include only the contactor and are used with power systems that have control capability.

FEATURES AND BENEFITS

Quality Materials

Extensive quality control insures components are manufactured to exacting standards resulting in trouble free operation in the field.

Contents

- LVD Disconnect Panels
- LVD Contactor Panels

LVD DISCONNECT PANELS

The LVD Disconnect Panel measures the system voltage and automatically disconnects the load from the battery when the system voltage drops below a preset value. The reconnection of the load is configurable as automatic or manual. Additional control panel functions include manual disconnect, adjustable time delay for disconnect, and remote disconnect. The panel is equipped with Form "C" contact outputs to alarm on disconnect.

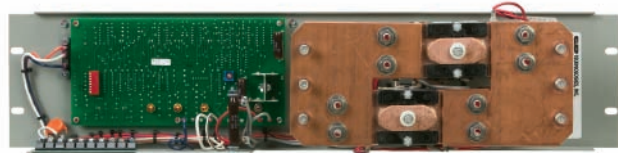
LVD Disconnect Panels

Part Number	Capacity (Amps)	System Voltage	Rack Width (in)	Height
111-2740-53	400	12	19/23	3 RU
111B-3291-10	50	24	19/23	3 RU
111B-3291-13	400	24	19/23	3 RU
111B-3291-14	800	24	19/23	3 RU
111B-3291-16	1200	24	19/23	3 RU
111B-3294-10	50	48	19/23	3 RU
111B-3294-13	400	48	19/23	3 RU
111B-3294-14	800	48	23	3 RU
111B-3294-16	1200	48	23	3 RU

Front



Back



LVD CONTACTOR PANELS

LVD Contactor Panels include the panel and contactor to disconnect the load from the battery. These panels are designed to be used with power systems equipped the capability to control external contactors such as the Sageon Power Module.

LVD Contactor Panels

Part Number	Capacity (Amps)	System Voltage	Rack Width (in)	Height
111B-3296-24	600	24	19	2 RU
111B-3295-24	600	24	23	2 RU
111B-3296-00	600	48	19	2 RU
111B-3295-00	600	48	23	2 RU

C&D TECHNOLOGIES, INC.

POWER SYSTEMS DIVISION

1400 Union Meeting Road
 P.O. Box 3053 • Blue Bell, PA 19422-0858
 (215) 619-2700 • Fax (215) 619-7899 • (800) 543-8630
 customersvc@cdtechno.com
 www.cdtechno.com

Any data, descriptions or specifications presented herein are subject to revision by C&D Technologies, Inc. without notice. While such information is believed to be accurate as indicated herein, C&D Technologies, Inc. makes no warranty and hereby disclaims all warranties, express or implied, with regard to the accuracy or completeness of such information. Further, because the product(s) featured herein may be used under conditions beyond its control, C&D Technologies, Inc. hereby disclaims all warranties, either express or implied, concerning the fitness or suitability of such product(s) for any particular use or in any specific application or arising from any course of dealing or usage of trade. The user is solely responsible for determining the suitability of the product(s) featured herein for user's intended purpose and in user's specific application.