

VRLA BATTERY RACKS

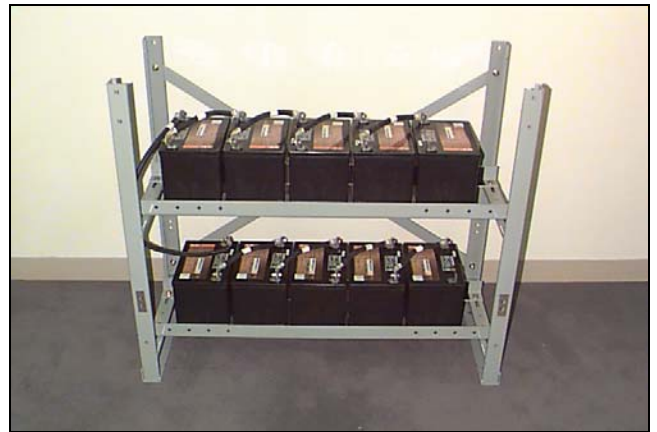
SELECTION GUIDE FOR RB-SERIES RACKS

For use with UPS, TEL, and SGC Series Battery Systems

FEATURES:

- Designed for convenient and safe installation, operation and maintenance of C&D Technologies VRLA batteries
- Model selection is simple – Just provide the battery model number and system nominal DC link voltage or battery/cell quantity to select the correct rack
- Easy assembly using conventional tools for American Standard hardware
- Standard and Seismic racks certified to UBC 1997 Earthquake Seismic Level Zone 4 to insure a code compliant, secure installation
- Standard Racks are field convertible to meet Seismic Zone 4 requirements without de-installing batteries or cables
- Available in 1, 2, 3 and 4 tier configurations – each tier accommodates up to 5 batteries
- All rack components fabricated from 10 GA steel with welded end-frames for rugged service
- Acid resistant ASA61 Gray epoxy powder coat paint
- Adjustable support rails for easy mounting include KYDEX plastic insulators to maintain electrical isolation between batteries and rack
- Ground strap mounting provisions insure personal safety – Each vertical frame has two 15/32" mounting holes that accept single hole or dual hole lugs on 1" centers
- Predrilled 15/16" holes are provided at the base of each vertical frame for floor mounting

RB Standard Rack



Two Tier

RB Seismic Rack



Two Tier

RB Series - Battery Rack Selection Table
For Battery Systems

SYSTEM NOMINAL DC LINK	MAXIMUM NUMBER OF CELLS PER SYSTEM	MAXIMUM NUMBER OF BATTERIES PER SYSTEM	USE WITH BATTERY MODELS			NUMBER OF TIERS PER RACK	NUMBER OF RACKS TO ORDER PER SYSTEM	EMPTY SLOTS PER SYSTEM
			SGC12-30 12-45	SGC12-70 12-80 12-90 12-125				
			TEL12-30 12-45	TEL12-70 12-80 12-90 12-125	TEL6-180			
			UPS12-100MR 12-150MR 12-210MR	UPS12-300MR 12-350MR 12-400MR 12-490MR 12-490MR 12-540MR	UPS6-620MR			
RACK PART NUMBER SELECT ONLY ONE <i>For Seismic Requirements, See Note #1 At Bottom of Page</i>								
48 VDC	24	4	RBN1T	RBW1T		1	1	1
120 VDC	60	10	RBN1T RBN2T			1 2	2 1	0
		10		RBW1T RBW2T		1 2	2 1	
		20			RBW1T RBW2T RBW4T	1 2 4	4 2 1	
180 VDC	90	15	RBN1T RBN3T			1 3	3 1	0
		15		RBW1T RBW3T		1 3	3 1	
		30			RBW1T RBW2T RBW3T	1 2 3	6 3 2	
216 VDC	108	18	RBN1T RBN2T RBN4T			1 2 4	4 2 1	2
		18		RBW1T RBW2T RBW4T		1 2 4	4 2 1	
		36			RBW1T RBW2T RBW4T	1 2 4	8 4 2	
240 VDC	120	20	RBN1T RBN2T RBN4T			1 2 4	4 2 1	0
		20		RBW1T RBW2T RBW4T		1 2 4	4 2 1	
		40			RBW1T RBW2T RBW4T	1 2 4	8 4 2	
360 VDC	180	30	RBN1T RBN2T RBN3T			1 2 3	6 3 2	0
		30		RBW1T RBW2T RBW3T		1 2 3	6 3 2	
		60			RBW1T RBW2T RBW3T RBW4T	1 2 3 4	12 6 4 3	

NOTE #1 For seismic applications, add "EQ" as a suffix to the rack Part Number

Example: Standard rack Part Number RBW1T - Seismic application for the same rack use Part Number RBW1TEQ

RB Series - Battery Rack Selection Table (Continued)
For Battery Systems

SYSTEM NOMINAL DC LINK	MAXIMUM NUMBER OF CELLS PER SYSTEM	MAXIMUM NUMBER OF BATTERIES PER SYSTEM	USE WITH BATTERY MODELS			NUMBER OF TIERS PER RACK	NUMBER OF RACKS TO ORDER PER SYSTEM	EMPTY SLOTS PER SYSTEM	
			SGC12-30 12-45	SGC12-70 12-80 12-90 12-125					
			TEL12-30 12-45	TEL12-70 12-80 12-90 12-125	TEL6-180				
			UPS12-100MR 12-150MR 12-210MR	UPS12-300MR 12-350MR 12-400MR 12-490MRLP 12-490MR 12-540MR	UPS6-620MR				
RACK PART NUMBER SELECT ONLY ONE <i>For Seismic Requirements, See Note #1 At Bottom of Page</i>									
384 VDC	192	32	RBN1T			1	7	3	
			RBN2T			2	4	8	
			RBN4T			4	2	8	
		32		RBW1T			1	7	3
				RBW2T			2	4	8
				RBW4T			4	2	8
		64			RBWIT		1	13	1
					RBW2T		2	7	6
					RBW3T		3	5	11
408 VDC	204	34	RBN1T			1	7	1	
			RBN2T			2	4	6	
			RBN4T			4	2	6	
		34		RBW1T			1	7	1
				RBW2T			2	4	6
				RBW4T			4	2	6
		68			RBWIT		1	14	2
					RBW2T		2	7	7
					RBW3T		3	5	7
480 VDC	228 to 240	38 to 40	RBN1T			1	8	0 to 2	
			RBN2T			2	4		
			RBN4T			4	2		
		38 to 40		RBW1T			1		8
				RBW2T			2		4
				RBW4T			4		2
	76 to 80			RBWIT		1	16	0 to 4	
				RBW2T		2	8		
				RBW4T		4	4		
	246 to 252	41 to 42	RBN1T			1	9	3 to 4	
			RBN2T			2	5	8 to 9	
			RBN3T			3	3	3 to 4	
41 to 42			RBW1T			1	9	3 to 4	
			RBW2T			2	5	8 to 9	
			RBW3T			3	3	3 to 4	
82 to 84			RBWIT		1	17	1 to 3		
			RBW2T		2	9	6 to 8		
			RBW3T		3	6	6 to 8		

NOTE #1 For seismic applications, add "EQ" as a suffix to the rack Part Number

Example: Standard rack Part Number RBW1T - Seismic application for the same rack use Part Number RBW1TEQ

Options for Standard Racks

Part Number	Description	Quantity Required
SMF101N	Top Cover - Narrow Rack	1 per Rack
SMF101W	Top Cover - Wide Rack	1 per Rack
FIELD RETROFIT of Standard Rack to meet SEISMIC Zone 4 Certification UBC 1997 Standard		
SMF105N	Seismic Hold-Down Kit - Narrow Rack	1 per Tier
SMF101N	Top Cover - Narrow Rack	1 per Rack
SMF105W	Seismic Hold-Down Kit - Wide Rack	1 per Tier
SMF101W	Top Cover - Wide Rack	1 per Rack

Cross Reference - Model vs. C&D Order Number

Model Number	C&D Order Number	RB Rack Description
RBN1T	30046136	1 Tier Non-Seismic Narrow Battery Rack
RBN2T	30046137	2 Tier Non-Seismic Narrow Battery Rack
RBN3T	30046138	3 Tier Non-Seismic Narrow Battery Rack
RBN4T	30046139	4 Tier Non-Seismic Narrow Battery Rack
RBN1TEQ	30046146	1 Tier Seismic (Zones 1-4) Narrow Battery Rack
RBN2TEQ	30046147	2 Tier Seismic (Zones 1-4) Narrow Battery Rack
RBN3TEQ	30046148	3 Tier Seismic (Zones 1-4) Narrow Battery Rack
RBN4TEQ	30046149	4 Tier Seismic (Zones 1-4) Narrow Battery Rack
RBW1T	30046140	1 Tier Non-Seismic Wide Battery Rack
RBW2T	30046141	2 Tier Non-Seismic Wide Battery Rack
RBW3T	30046142	3 Tier Non-Seismic Wide Battery Rack
RBW4T	30046143	4 Tier Non-Seismic Wide Battery Rack
RBW1TEQ	30046150	1 Tier Seismic (Zones 1-4) Wide Battery Rack
RBW2TEQ	30046151	2 Tier Seismic (Zones 1-4) Wide Battery Rack
RBW3TEQ	30046152	3 Tier Seismic (Zones 1-4) Wide Battery Rack
RBW4TEQ	30046153	4 Tier Seismic (Zones 1-4) Wide Battery Rack
SMF101N	30046156	Top Cover for RBN Narrow Racks
SMF101W	30046157	Top Cover for RBW Wide Racks
SMF105N	30046158	Seismic Bracing Kit per Teir for RBN Narrow Racks
SMF105W	30046159	Seismic Bracing Kit per Teir for RBW Wide Racks

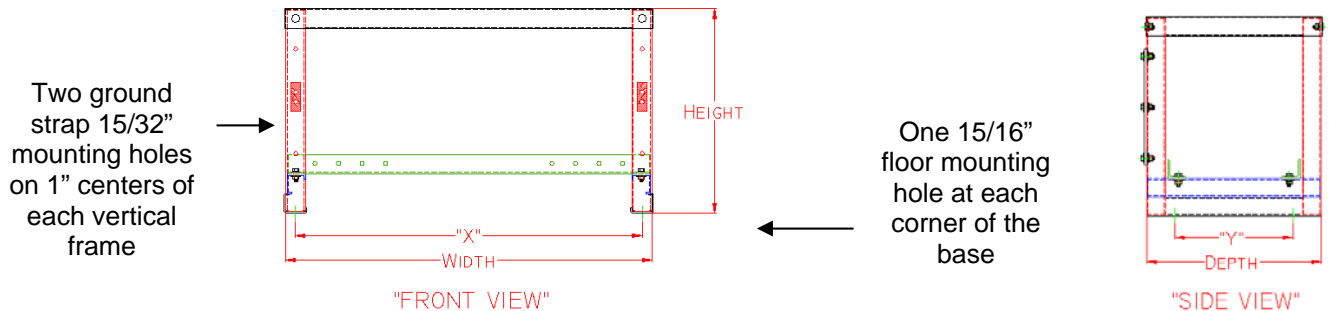
INSTALLATION:

- See C&D document 41-6976, RB Series Racks Assembly Instructions for details

RB Series - Battery Rack Specifications

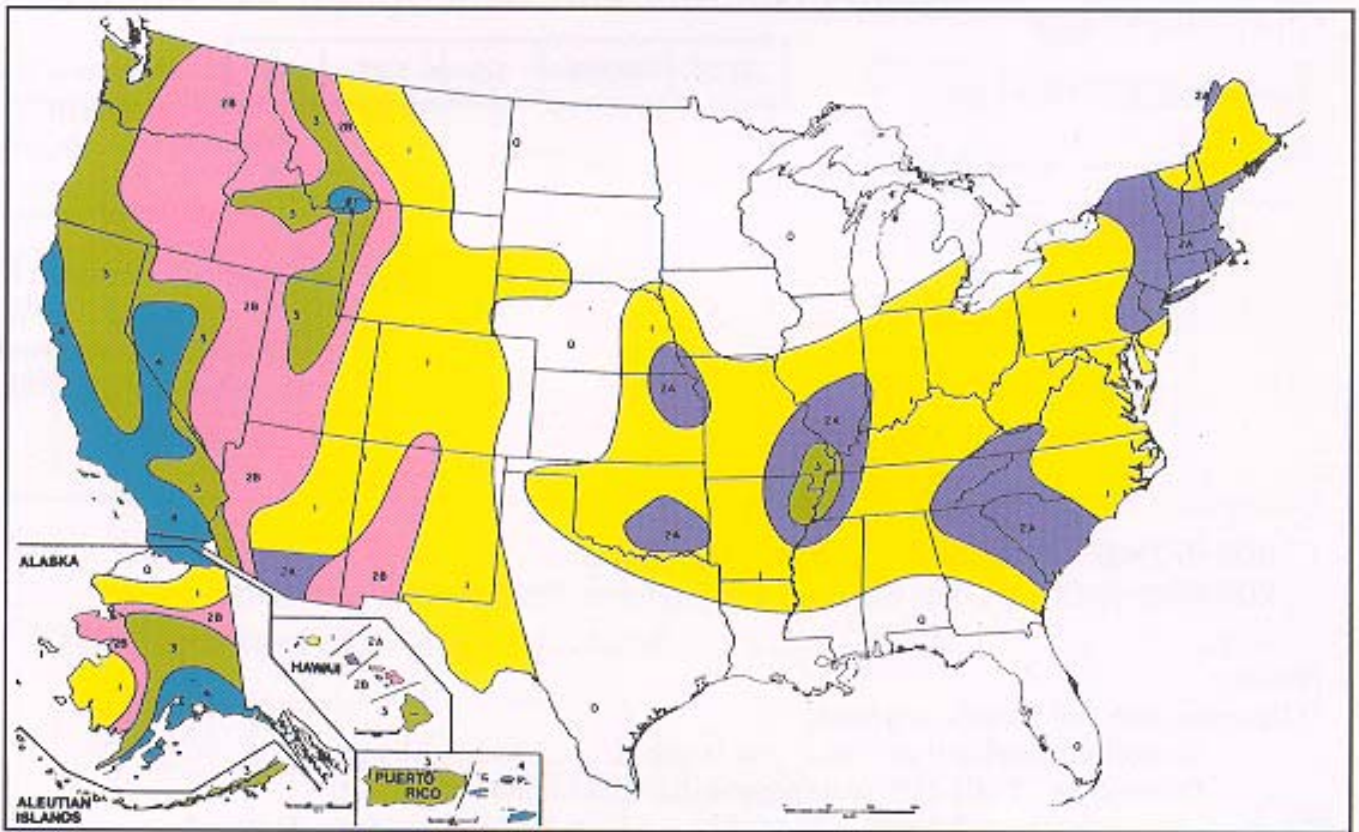
Rack Part Number	Seismic Zone	Max. Qty. Number of Tiers	Batteries per Tier	Total Batteries per Rack	Dimensions - inches			Rack Weight, lbs.		Use with Battery Models		
					Width*	Depth	Height	Rack Only	Rack in Carton			
NARROW - "RBN" Rack Assemblies												
RBN1T	0	1	5	5	38.00*	18.50	21.13	52	57	UPS12-100MR UPS12-150MR UPS12-210MR SGC12-30 SGC12-45 TEL12-30 TEL12-45		
RBN1TEQ	1,2,3 or 4							87	92			
RBN2T	0	2					10	38.25	55.38		88	93
RBN2TEQ	1,2,3 or 4										138	143
RBN3T	0	3					15	55.38	72.50		124	129
RBN3TEQ	1,2,3 or 4										190	195
RBN4T	0	4					20	72.50	162		167	
RBN4TEQ	1,2,3 or 4								232		237	
WIDE - "RBW" Rack Assemblies												
RBWIT	0	1	5	5	44.00*	18.50	21.13	54	59	UPS12-300MR UPS12-350MR UPS12-400MR UPS12-490MRLP UPS12-490MR UPS12-540MR UPS6-620MR SGC12-70 SGC12-80 SGC12-90 SGC12-125 TEL12-70 TEL12-80 TEL12-90 TEL12-125 TEL6-180		
RBWITEQ	1,2,3 or 4							104	109			
RBW2T	0	2					10	38.25	55.38		117	122
RBW2TEQ	1,2,3 or 4										147	152
RBW3T	0	3					15	55.38	72.50		130	135
RBW3TEQ	1,2,3 or 4										200	205
RBW4T	0	4					20	72.50	170		175	
RBW4TEQ	1,2,3 or 4								252		257	

* Width of rack base only. Top cover adds 0.20 inch to nominal width dimension



RB Rack - Orientation

Seismic Zone Map of the United States
(Reference 1997 Uniform Building Codes)



C&D RB Battery Rack Selection
Based on UBC Seismic Loads (g)

UBC Seismic Zone	Non-essential, at or below grade (g)	Non-essential, above grade OR Essential at or below grade (g)	Essential above grade (g)	Use RB Battery Rack
☐ ZONE-0	0.000	0.000	0.000	RB Rack
■ ZONE-1	0.075	0.113	0.169	RB Rack With "EQ" Suffix in Model Number
■ ZONE-2A	0.150	0.225	0.338	
■ ZONE-2B	0.200	0.300	0.450	
■ ZONE-3	0.300	0.450	0.675	
■ ZONE-4	0.400	0.600	0.900	

C&D Technologies, Inc. recommends that you consult your local or state building commission to verify the seismic zone factor and to check on local and special building requirements.

C&D TECHNOLOGIES, INC.

1400 Union Meeting Road
P.O. Box 3053 • Blue Bell, PA 19422-0858
(215) 619-2700 • Fax (215) 619-7899 • (800) 543-8630
customersvc@cdtechno.com
www.cdtechno.com

Any data, descriptions or specifications presented herein are subject to revision by C&D Technologies, Inc. without notice. While such information is believed to be accurate as indicated herein, C&D Technologies, Inc. makes no warranty and hereby disclaims all warranties, express or implied, with regard to the accuracy or completeness of such information. Further, because the product(s) featured herein may be used under conditions beyond its control, C&D Technologies, Inc. hereby disclaims all warranties, either express or implied, concerning the fitness or suitability of such product(s) for any particular use or in any specific application or arising from any course of dealing or usage of trade. The user is solely responsible for determining the suitability of the product(s) featured herein for user's intended purpose and in user's specific application.